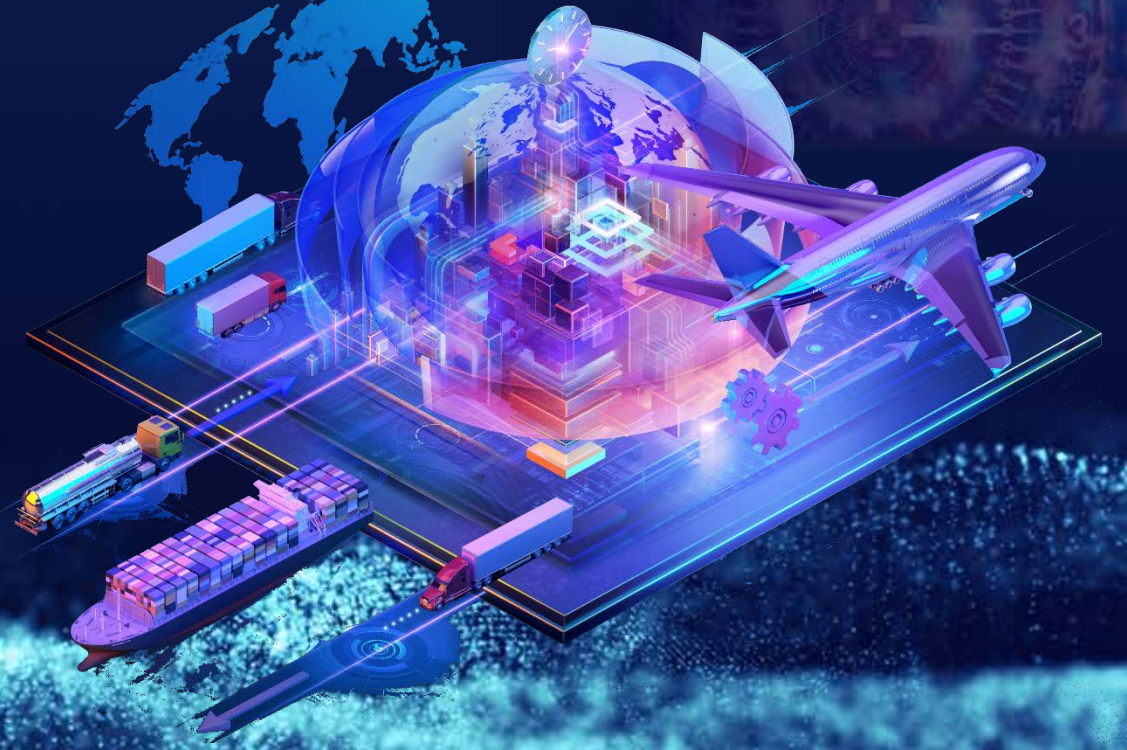




Methodologies & Tools to Enhance
Supply Chain Resilience



A consulting service by: **TIMESTREAM** 

Copyright 2022 - Intellectual property of Timestream Management & Solutions FZCO - UAE

Why **Supply Chain Resilience**?

Logistics Performance Index (LPI) – World Bank

- Next report planned for February 2023 will highlight the issue of supply chain resilience



World Economic Forum*

- The impact of the pandemic on supply chains has been global, prolonged, and comprised a series of major shocks to companies' logistical systems.
- While the pandemic has accelerated the automation of logistics activities, reducing their exposure to future epidemiological risks, some of the biggest lessons for the future center on new managerial thinking



Boston Consulting Group Executive Perspective**

- Supply chain resilience creates better business outcomes and requires action today to build key capabilities and enablers
- Companies that invest in supply chain resilience capabilities turn disruption into a competitive advantage. The gross profit growth of resilience leaders outpaced that of laggards by up to 55 percentage points.
- Leaders succeeded because they invested before they needed it.
- Without these capabilities, companies are exposed to inevitable supply chain disruptions. Resilient supply chains can minimize costs and lost revenue in times of crisis and support accelerated growth in times of expansion.



*WEF Article - Dec 2021 - Supply chain resilience: How are pandemic-related disruptions reshaping managerial thinking?

**BCG - December 2022 - The CEO's Dilemma - Preparing Your Supply Chain for Resilience

Who needs **Supply Chain Resilience**?

Government Authorities

- To increase LPI Score of their country focusing upon improving logistics service quality and introducing conducive regulations

Port Operators

As a nexus to the maritime industry, these seaports require periodic upgrades and enhancements to ensure port supply chains remain resilient. Port operations must learn to adapt. The goal is uninterrupted supply chain and logistics

Logistics Companies

Develop capabilities to minimize operational risk and interruptions

- Supply chain resilience is the core of the logistics industry. Good supply chains ensure that goods are delivered on time and help logistics companies to stay financially stable.

All organizations that procure and supply goods globally

Build a resilient supply chain for sourcing of goods and gain visibility into processes in order to quickly respond to challenges.



Logistics Performance Index (LPI)

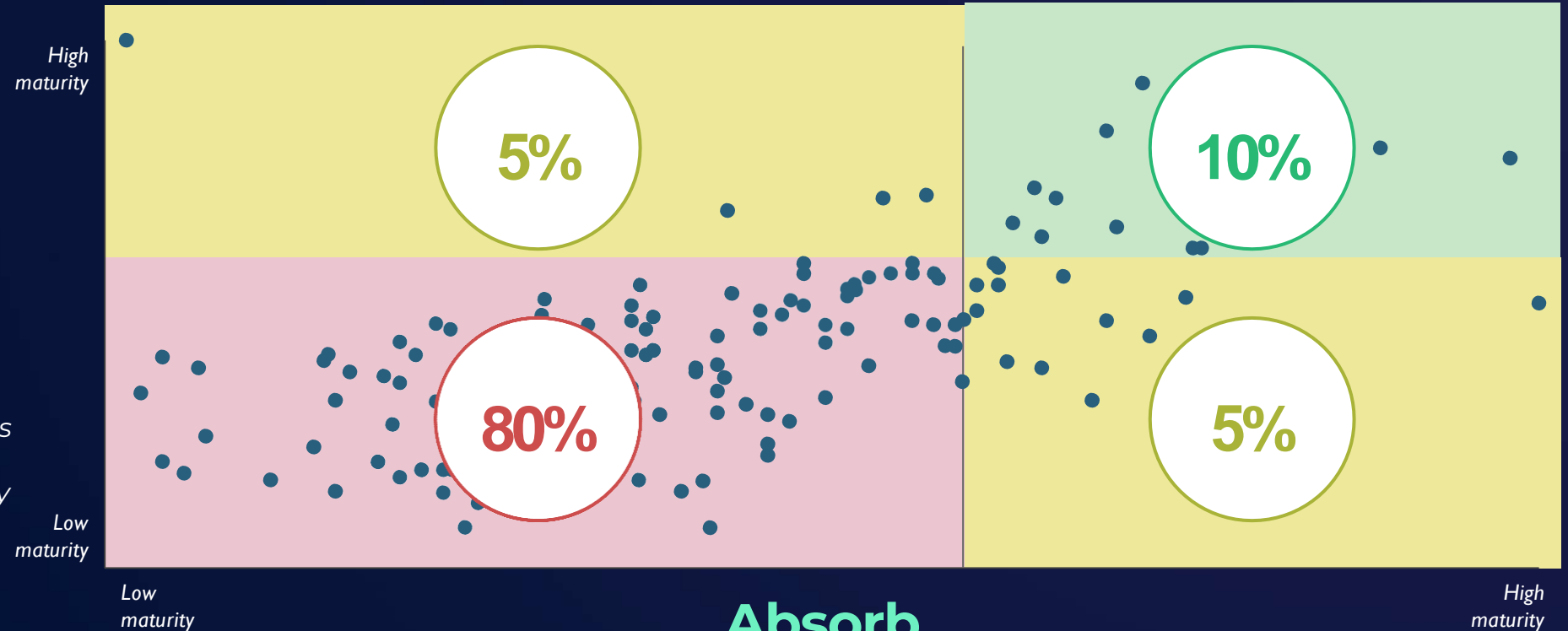
Facts

A resilient supply chain helps absorb shocks and recover from disruption faster – but few companies have managed to build these capabilities yet *

Recover

React faster when supply chain disruption occurs

e.g., digital twin of operations to evaluate disruption scenarios and prepare supply chain to minimize financial impact



Absorb

Increase ability to handle supply chain shocks

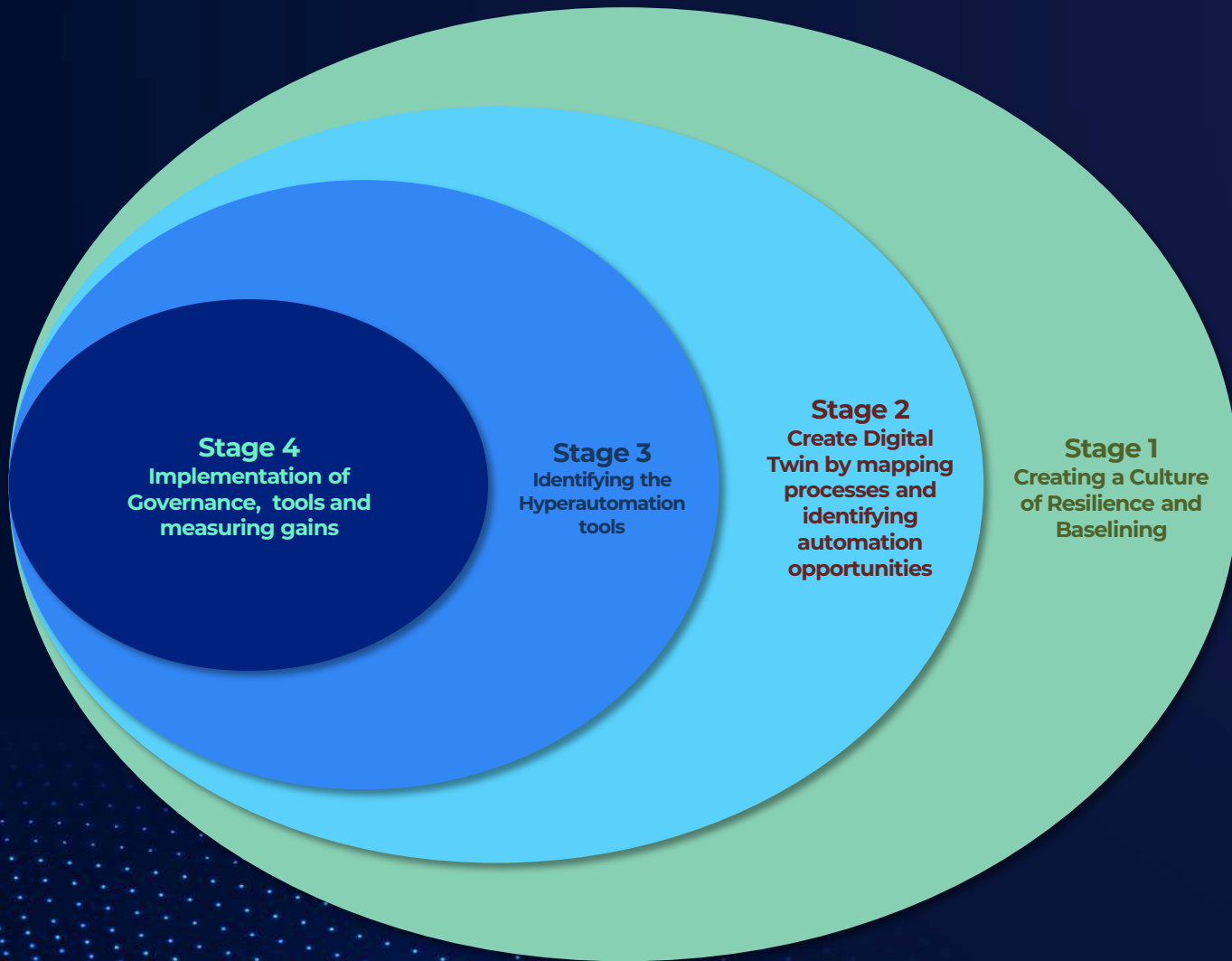
e.g., tiered sourcing strategy for custom/critical components through product redesign or alternative sourcing options



Denotes % of companies in quadrant

Source: BCG 2022 supply chain resilience capabilities survey (N=136)

scrSTREAM Framework



Stage 1

- VUCA Leadership Training
- Business Agility Profiling leading to Certification

Stage 2

- Mapping of end-end Trade Logistics Supply Chain Process
- Identifying the Hyperautomation opportunities
- Baseline key strategic objectives
- Set targets for identified KPIs

Stage 03

- Identifying and selecting the tools required to accelerate Hyperautomation
- Map the initiatives to organizational objectives
- Prioritization of the identified initiatives

Stage 04

- Create governance around flexibility
- Project planning and execution of the identified initiatives
- Measuring the gains against KPI baseline

Recover

React faster when supply chain disruption occurs

Absorb

Increase ability to handle supply chain shocks

scrSTREAM Service



Creating a Culture of Resilience

- Understanding VUCA
- Business Agility organizational assessment

agileSTREAM



Identifying Hyperautomation Opportunities and prioritizing

- Create digital twin of operations
- Map end-end logistics process
- Identify technology for hyperautomation by bridging the gaps
- Identify objectives and KPIs
- Prioritize the initiatives

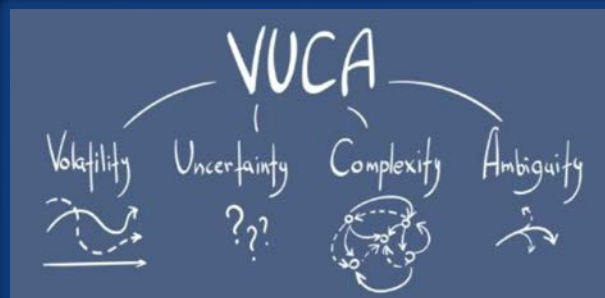
processSTREAM



Execution and Measurement

- Deploy automation tools
- Ensure creation of agile and resilient foundation
- Deploy required governance around capabilities
- Report on KPIs and test resilience through what-if scenario simulation

processSTREAM



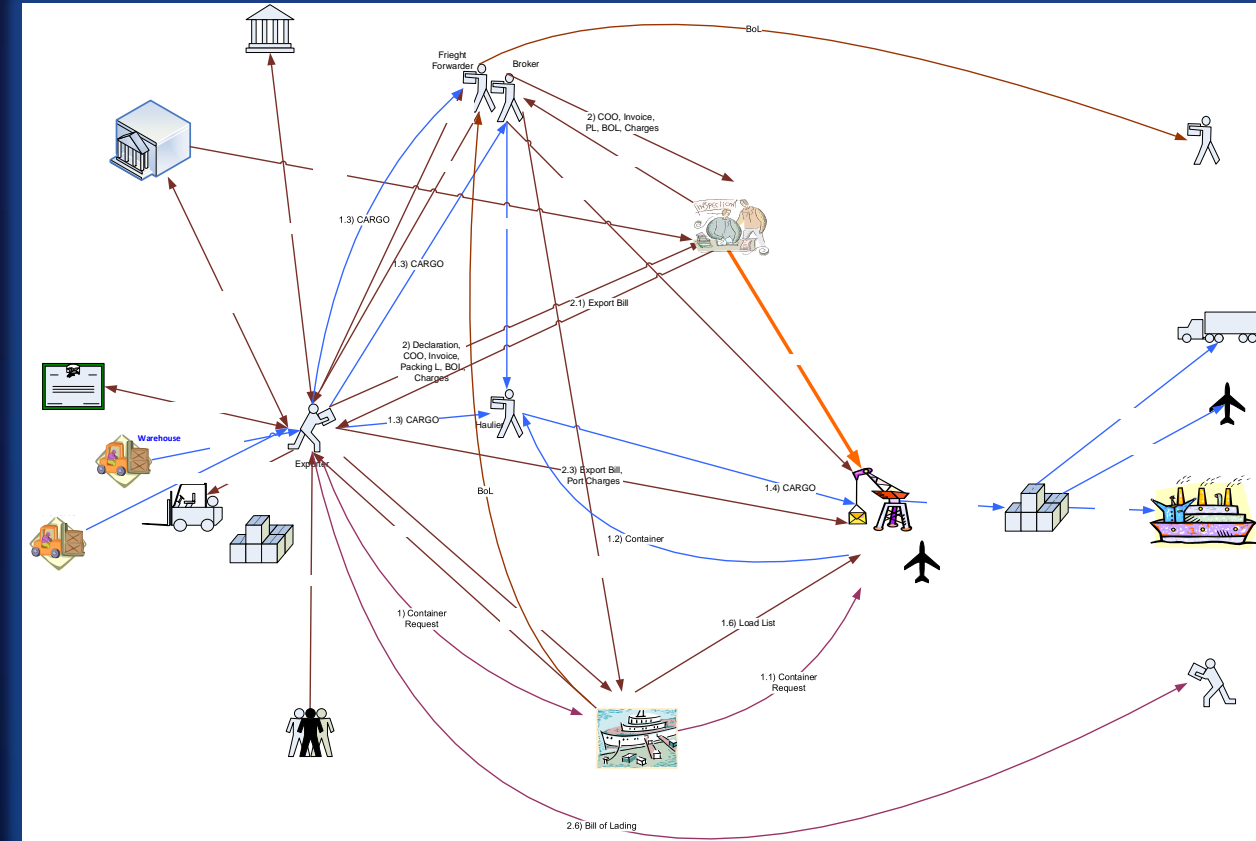
Benefits of **scrSTREAM** Service

Government Authorities – increase in LPI score

- Integrated Logistics through digitalization reduces number of government agencies touch points for imports and exports, facilitating single window operation
- Automation of process and integration of data reduces number of forms required for imports and exports
- Covering the entire process: ocean, inland, customs management, warehousing and added services, will give a connected and seamless supply chain, reducing clearance time, improving visibility and conformance to delivery schedule
- Streamlined end-to-end logistics give sustainability through increased visibility, more control and further agility

Port Operators

- Port operations integrated in the supply chain will benefit from seamless communication, elimination of wastage, and cost reduction in operations (e.g. through JIT), interconnectivity and interoperability of modal infrastructure, and operations and provision of value-added services (VAS) and customer satisfaction
- Data and application integration with partners and use of IoT through our suggested digitalization platform will facilitate ports operation assessment in near real-time



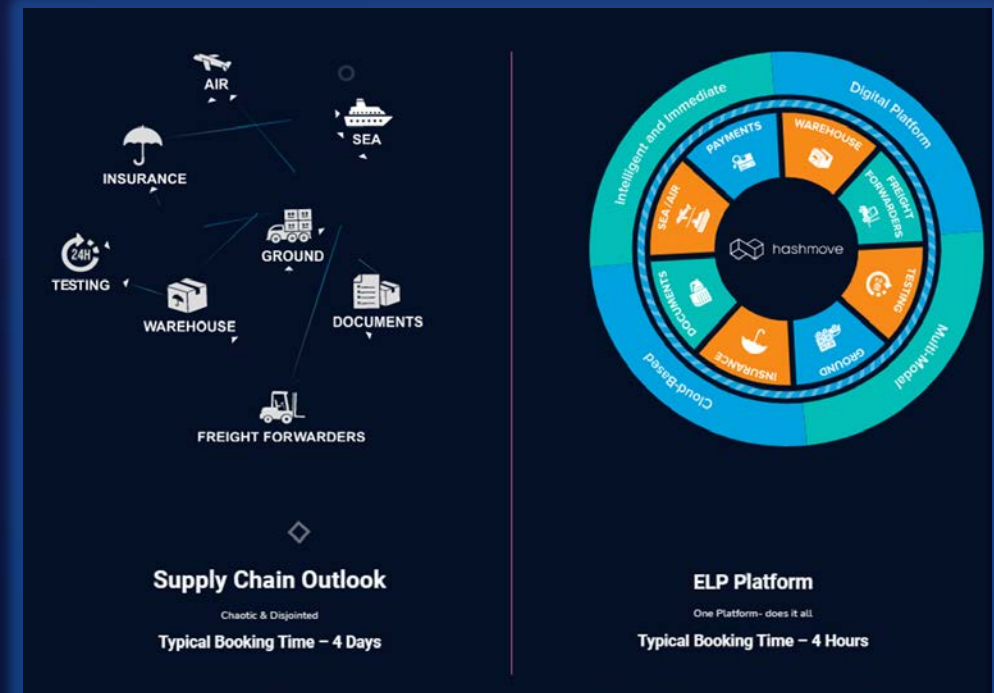
Benefits of **scrSTREAM** **Service**

Logistics Companies

- With end-to-end logistics, businesses can vary transport modes, split product loads and vary warehousing options
- Complete supply chain visibility companies can identify the impact of disruptions quickly and respond by changing connections and find new warehousing and distribution options that circumvent issues
- Capacity optimization through IoT, specially for air cargo, that is expensive to transport and is based on package size
- Our integrated B2B logistics platform HashMove facilitates route and shipment cost optimization


All organizations that procure and supply goods globally

- Understanding what is happening from one end of the supply chain to the other is key to making crucial decisions in supply chain planning
- While improving speed to market and streamlining processes, FMCG companies can reduce costs by consolidating production facilities and leveraging economies of scale. This ensures that high-quality service aligns with budgetary concerns
- Significant cost savings of freight cost through HashMove Enterprise Logistics Platform



For more information, contact



 (+971) 55 592 0527

 info@timestreamgroup.com

 www.timestreamgroup.com