



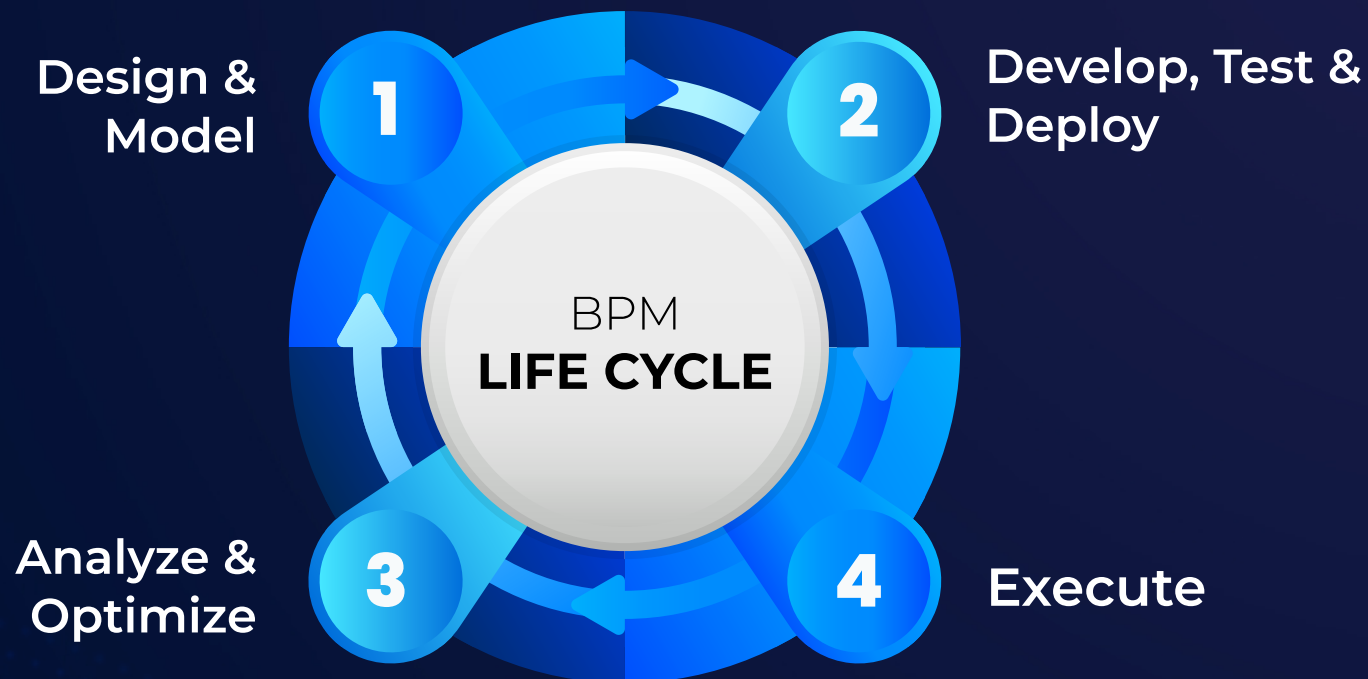
# A Comprehensive Business Process Optimization & Re-engineering Service



A consulting service by: **TIMESTREAM**

# What is **processSTREAM** service?

- A comprehensive business process optimization and re-engineering service.
- Our practice is built upon BPM discipline.
- Business process management (BPM) is the discipline in which people use various methods to discover, model, analyze, measure, improve, optimize, and automate business processes.
- Use of BPM enabling technologies targeted towards reduction in overall process time based on BPM concepts.



# How we Deliver?

We use Business Process Management Concept and Outside-In approach to optimize your services and processes.



- Based on best-in-class optimization methodologies and frameworks.
- Service Value Stream mapping methodology
- Outside-in” Approach to Process Optimization through process maturity assessment and optimization using CEMMethod™
- Analyzing Process Steps (PS), Moments of Truth (MoT), Break Points (BP), Business Rules (BR) and calculating Points of Failure (PoF).
- Process optimization methodologies deployed resulted in more than 140M AED endorsed savings for a major semi-Government group in Dubai.

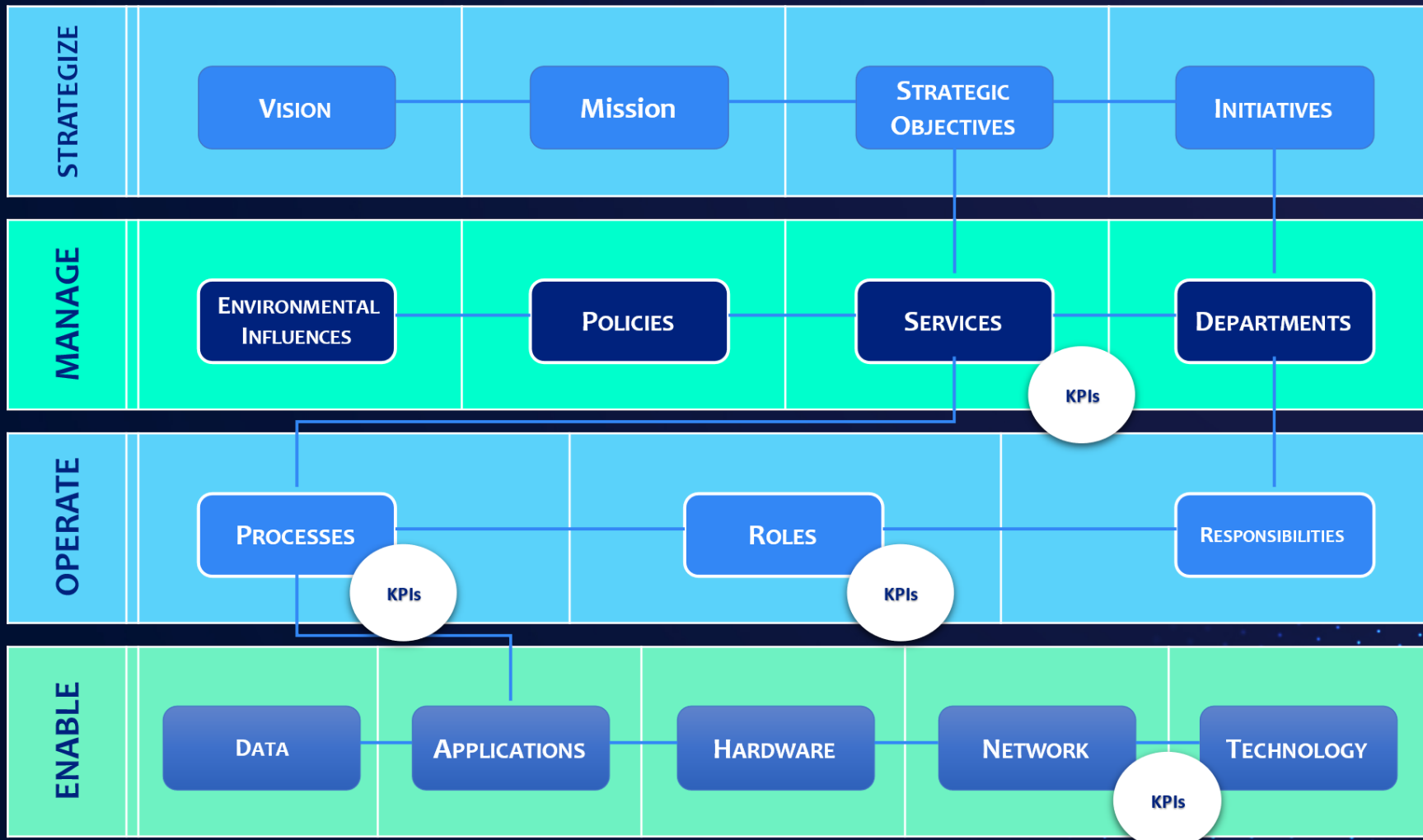
# Leveraging IT Investment & **Digital Transformation**

- Further possible optimization through Software AG Platform for strategy execution and value realization.
- webMethods, THE integration market leader and the #1 application integration platform of Software AG. With webMethods, integrating everything—applications, clouds, mainframe systems and even IoT devices—makes your business processes more efficient and your enterprise more agile.
- Analyze your process KPIs and automatically identify the patterns that influence them via AI. Use a process mining tool to discover weaknesses and resolve deviations.
- Simulate scenarios to identify efficient ways to achieve process improvement. Adapt your existing process design and make it the blueprint for execution and rollout with ARIS.
- By combining process management and robotic process automation (RPA), you can scale and make your investment in RPA a guaranteed success.



# Capitalize existing IT Investments to align with **organizational strategy and results**

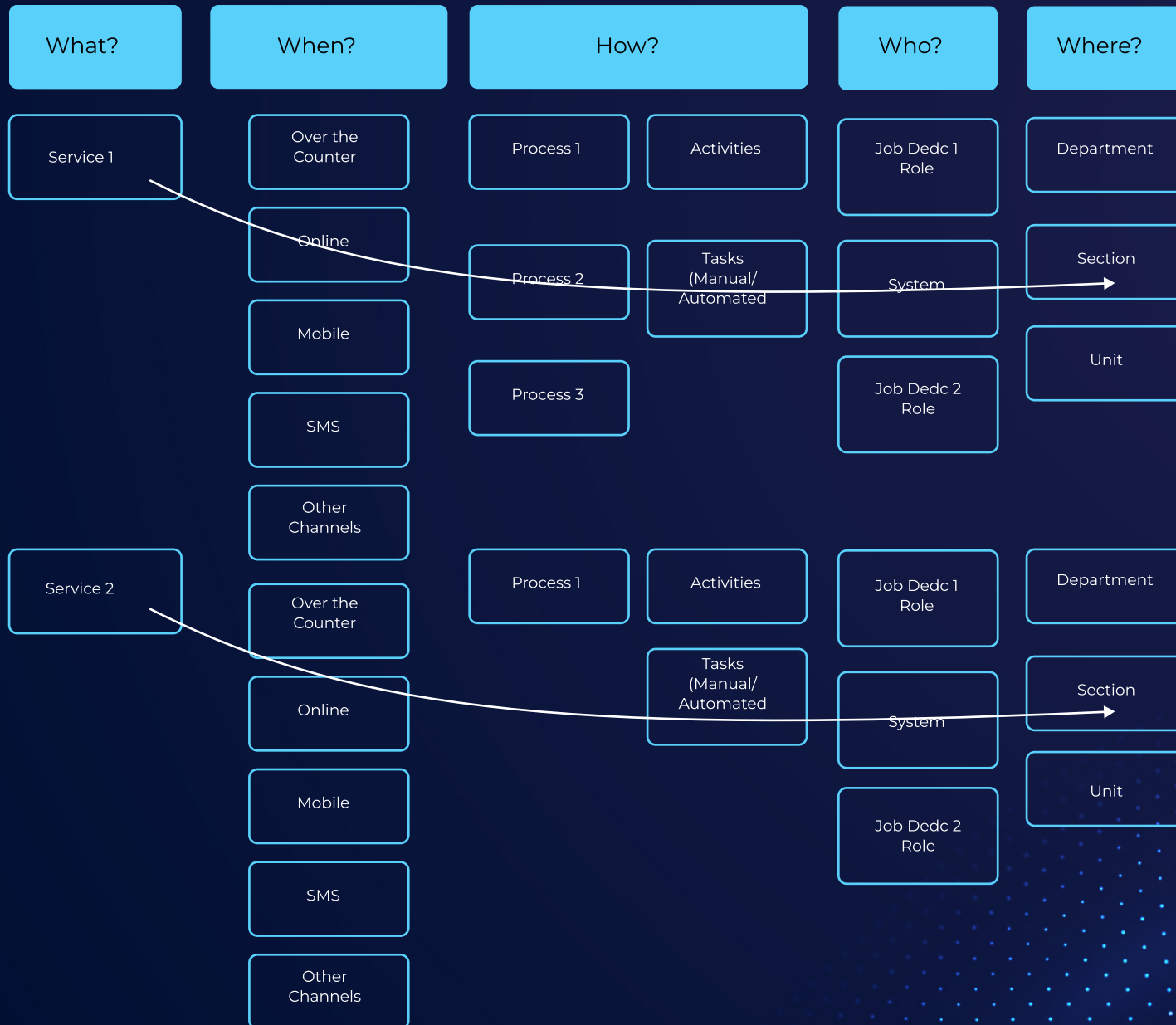
- Making sure your existing IT Investments add measurable value to your business.



# How much does it cost to provide your **Services?**

- Service Provisioning costing methodology implementation to provide near actual cost using Activity Based Costing.
- Extending Service Value Stream Mapping to Cost Element Level
- Using Process Automation Tools (BPM Tool) to capture actual time-based cost for near accurate Activity Based Costing (ABC)
- Service delivery cost optimization for organization as well as customers to enhance customer satisfaction.
- Customer visit reduction
- Elimination of Non Value-added Activities (NVA)
- Reduction in hand-offs

# Service Value Stream Mapping **Methodology**



# Service Costing Methodology

## Task Level Example

System cost as booked for the cost center calculated for one day as: Cost for the month / number of days in the month . Per transaction

cost = Cost per day / number of transactions processed per day

E.g -1 AED per Certificate

Depreciation cost per Per day / No. of transactions in one day



E.g., Rate AED 50.00 per hour = 0.83 AED per Minute

E.g 0.1 AED per Certificate + ink or toner cost per page



(+971) 55 592 0527



[info@timestreamgroup.com](mailto:info@timestreamgroup.com)



[www.timestreamgroup.com](http://www.timestreamgroup.com)

For more information, contact

